

## Delta Roll 4000, Electrically Operated, Direct Drive, Security Roller Shutter Door Product Data Sheet 1 / 4

### Product Description

Our Delta Roll 4000 electrically operated door is designed for areas where security and frequent use are of paramount importance.

The door is electrically driven either via a safe drive motor gearbox or an inboard mounted motor with chain drive to the barrel plate wheel.

All inboard drive doors are also fitted with either a helical torsion spring inside the barrel or safety brake anti fall bearing on the non-motor end.

Either of the drive systems is in full compliance with the latest European legislation relating to industrial doors.

The size of the motor and spring is determined by the weight of the curtain.



### Curtain

The curtain is constructed from 75mm wide curved sections manufactured from 22SWG, 20SWG or 18SWG (over 22 Sqm) galvanised steel (EN10142 bright spangle) lath interlocked together and finished with a T or L section bottom rail.

Each lath is locked together to prevent lateral movement using a nylon, pressed or cast steel end locks.

The curtain can be supplied in solid, perforated or a punched format. The punching can be supplied in either an inline or brick bond type format. In addition to the above tube and link curtains are available.

Optional powder coated or plastisol finishes are available.

### Barrel

Constructed from ERW steel tube mounted on a 25mm diameter steel stub shaft. Bearing blocks are fitted to each end plate to support the shaft. Barrels do not incorporate helical torsion springs as the arrest feature is either an inertia brake installed on the non-motor side or the motor is a safe drive unit with its own built in anti fall gearbox.

### Electrical Operation

By means of a single or three-phase motor complete with rotary limits and emergency hand chain mechanism. The size of the motor is calculated by the weight of the door and the number of operations.

The door is controlled as standard from a 3 push button control unit.

All Delta Roll 4000 roller shutters meet the new British & European Standards for Industrial and Commercial Doors, principally BS EN 12604:2000 - Mechanical aspects and BSEN 12453:2001 - Safety in use of power operated doors. All doors comply with the European Directives for Machinery, Low Voltage and EMC. All control voltage is 24v and is usually via a 3 push button control unit as standard.

All direct drive motors have as standard a safety brake (anti fall device). Other control systems are available to automate the door i.e. for use in car parks etc.

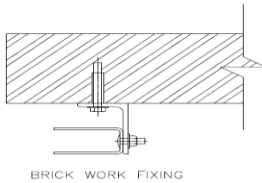
Dependant on the motor, the doors need either a 415v, 3 phase, earth and neutral or 240v single phase 16 amp supply.



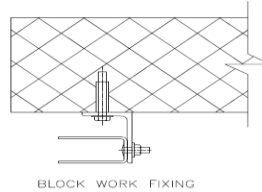


## Guides

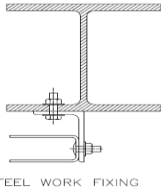
Constructed from 3mm x 63mm steel wind guide channel, bolted to 75mm x 50mm steel angle. For large exposed doors, either deeper 100mm guide channels are used or wind locked guides complete with fitting steel wind locks to the curtain in addition to the end locks.



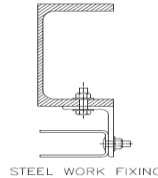
BRICK WORK FIXING



BLOCK WORK FIXING



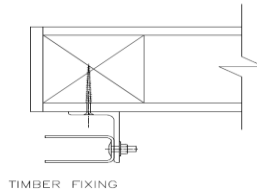
STEEL WORK FIXING



STEEL WORK FIXING



STEEL WORK FIXING



TIMBER FIXING

## Operation

Normally shutters are operated with push to run operation to open the door and dead man operation to close. Shutters can be operated push to run in both directions provided safety features are added to the door i.e. electric safety edge, photo cell.

## Standard Finish

Galvanised

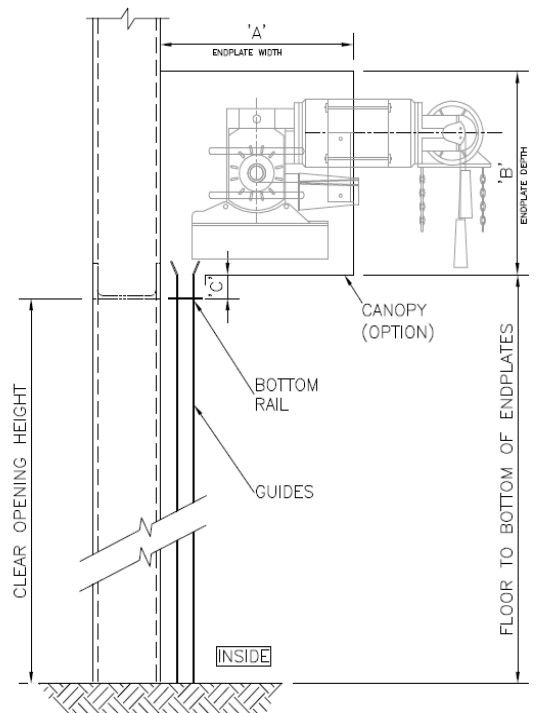
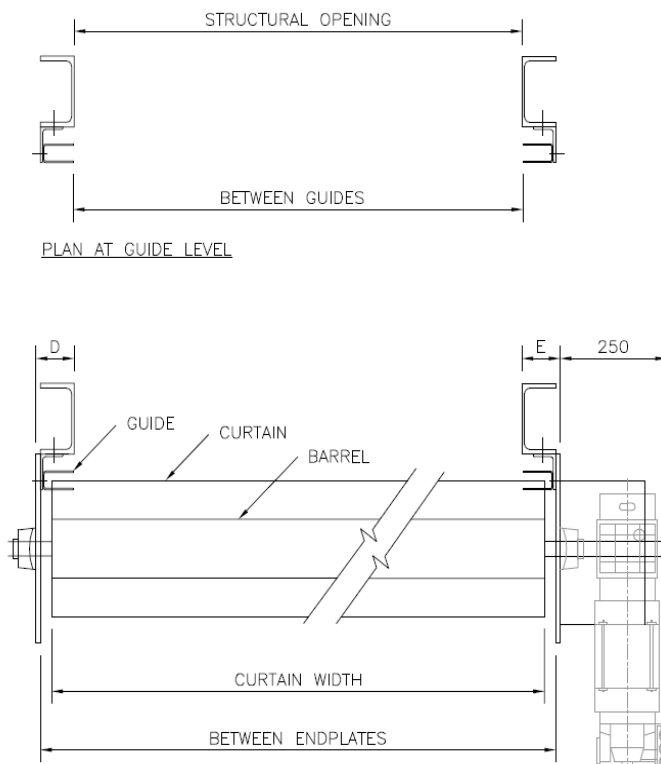
One coat of primer paint, on non-galvanised faces.

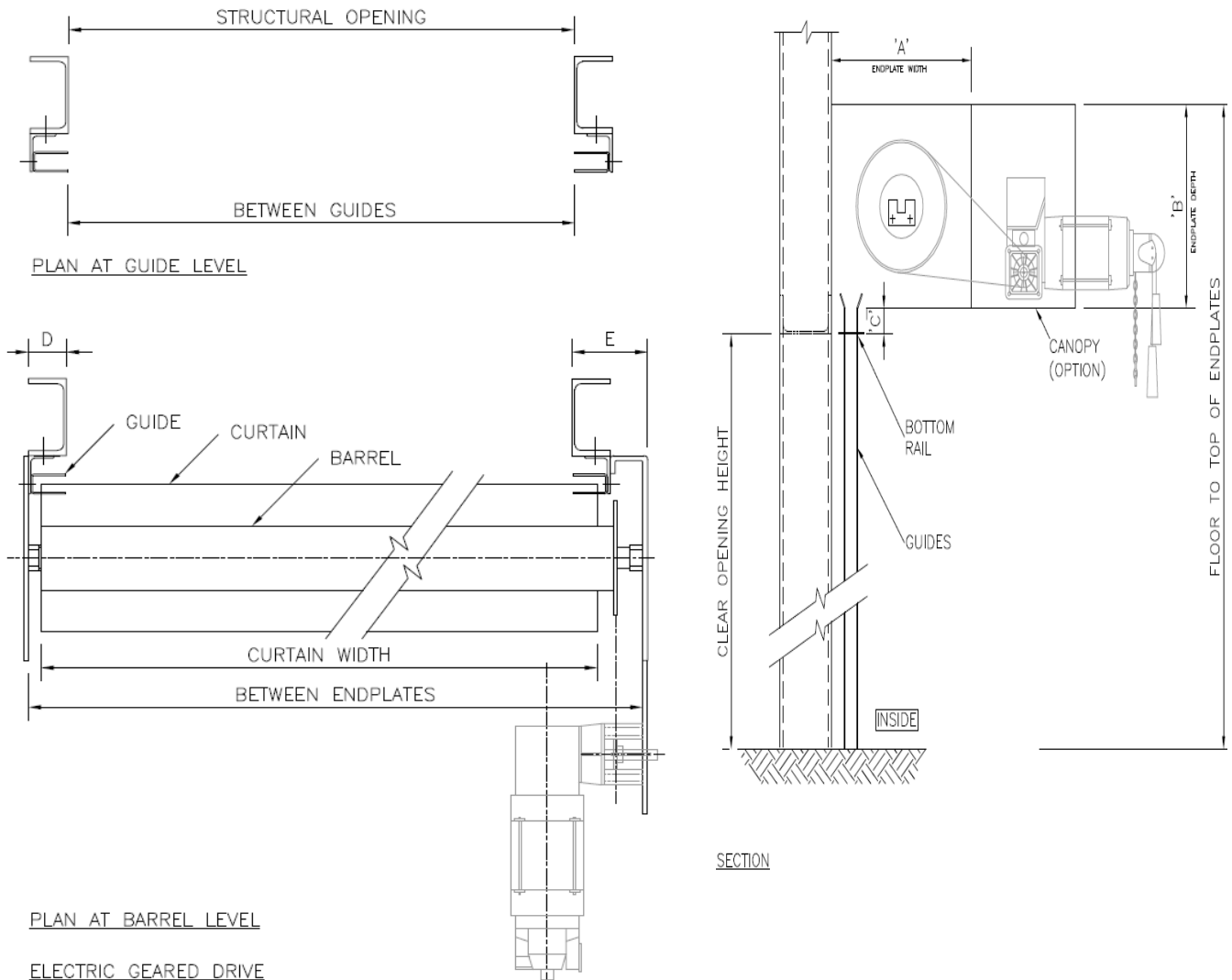
## Optional Specifications

- Plastisol coated lath
- Perforated lath
- Punched lath
- Tube & link
- Powder coated
- Wicket gate for manual or electrical operated shutters.
- Canopies, fascia and motor covers.
- Bottom draught strips.
- Side brush seals

## Electrical Optional Extras

- Safety edge to bottom rail
- Key switch
- Photo cells
- Remote controls
- Group controls





## Warranty

The Delta Roll 4000 doors are supplied with a 24 month parts and labour warranty as standard providing the equipment is maintained in accordance with the manufacturer's instruction and not modified in any way whatsoever. Full details of the servicing requirements are available.

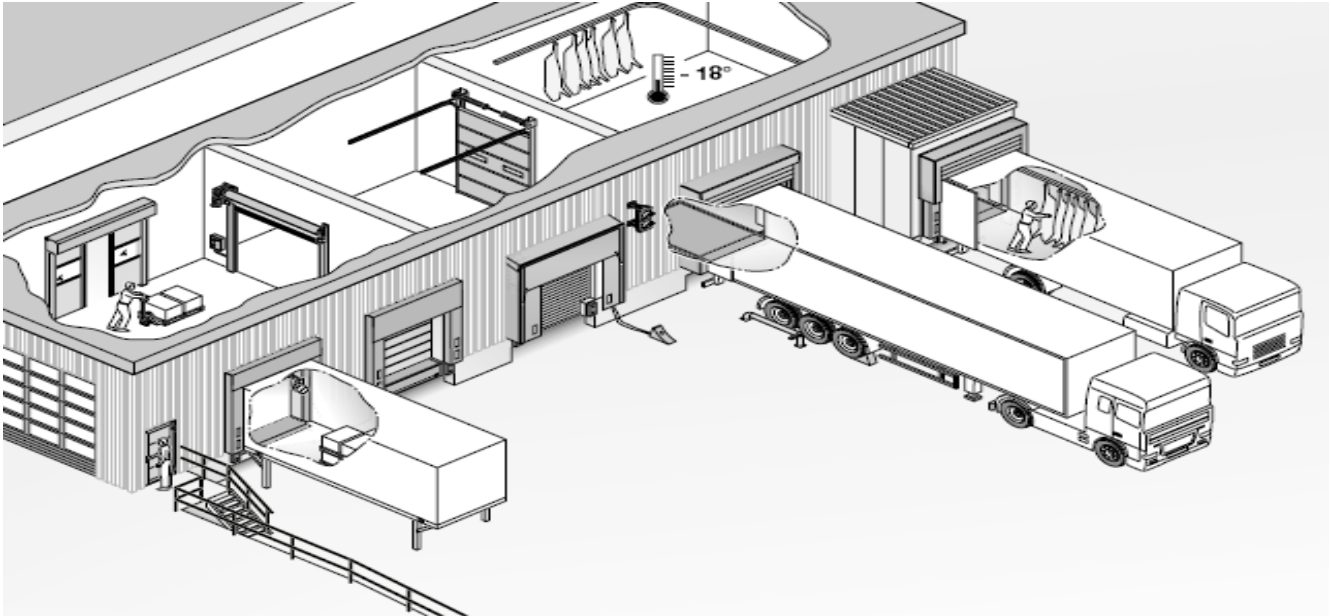
## Servicing

To help protect your investment and extend the effective working life of the equipment, full maintenance packages are available and, in most cases, we can maintain all of your existing doors and loading bay equipment. The door must be serviced at least once per annum.

Full details of our preventative maintenance packages are available on request. Enerco recommend the first service is carried out 6 months after installation.

We have Worksafe Contractor, CHAS and Construction Line accreditation as well as being active members of the Doors and Hardware Federation (DHF) where we have their seal of approval for the service and maintenance of doors. We ensure that our staff are trained to the highest standard and all have an NVQ qualification in line with current industry guidelines This NVQ is in addition to the CSCS Health and Safety, First Aid, Asbestos Awareness and other training including product training applicable to our industry and is continually being updated.





Other products in the Delta range from Enerco include: -

- |   |  |
|---|--|
| Delta Guard – Commercial Shutters           | Delta Roll – Steel Roller Shutter Doors              |
| Delta Check – Fire Roller Shutter           | Delta Secure – High Speed Security Doors             |
| Delta Slide – Insulated Overhead Doors      | Delta Insudoor – Insulated Roller Shutters           |
| Delta Part – Bi – Parting & Sliding Doors   | Delta Strip – Strip Curtains                         |
| Delta Steel – Steel Security Door Sets      | Delta Fold – Steel Sliding Folding Shutters          |
| Delta Bar – Fixed & Removable Window Bars   | Delta Lift – Scissor Lifts                           |
| Delta Seal – Dock Sealing Systems           | Delta Shield – Perimeter Security                    |
| Delta Speed – High Speed Doors              | Delta Grille – Retractable Window Grilles            |
| Delta Service – Service and Repairs         | Delta Load – Loading Bay Accessories                 |
| Delta Glide – Garage Doors                  | Delta Crash – Rubber, Polyurethane & PVC Swing Doors |
| Delta Glaze – Aluminium Glazed Door Systems |  |

Please contact our sales team for more information on 01525 289322 or a brochure. Alternatively visit our web site [www.enerco.co.uk](http://www.enerco.co.uk) or [www.enercohighspeeddoors.co.uk](http://www.enercohighspeeddoors.co.uk)

We reserve the right to change the specification or alter the product data sheet without prior notification.