

Delta Roll 2000 Push Up - Pull Down, Security Roller Shutter Door
Product Data Sheet
1 / 2

Product Description

The Delta Roll 2000 push up pull down operated roller shutter is designed for applications where security is of paramount importance. The door is manually opened and closed by easily lifting and lowering the curtain.

The weight of the curtain is counterbalanced by a torsion spring mounted in the barrel. The size of spring is calculated by the weight of the curtain to ensure the energy required to lift and lower the curtain does not exceed the manual handling regulations.

If an electric drive or manual hand chain door is required then our other Delta Roll products are to be used.

This style of door is ideally suited to shop front applications, office building security, etc. The compact design ensures that the door is adaptable to most environments whether fitted inside or out.



Curtain

Constructed from 75mm wide curved section in 22SWG, 20SWG or 18SWG (over 22 Sqm), interlocking galvanised (EN10142 bright spangle) steel lath finished with a T section bottom rail. Each lath is locked together to prevent lateral movement using a nylon or pressed steel end locks.

The curtain can be supplied in solid, perforated or a punched format. The punching can be supplied in either an inline or brick bond type format. In addition to the above tube and link curtains are available.

The above types of curtain can be supplied in either standard galvanised, powder coated or plastisol.

Barrel

Constructed from ERW steel tube mounted on a two steel stub shafts. Bearings are fitted to each end of the barrel and the shaft locates into steel cups fitted to each end plate.

The barrel incorporates helical torsion springs to counterbalance the weight of the curtain and the arrest feature is an optional inertia safety anti fall brake installed one side (subject to the risk assessment of the door application).

Manual Operation

The door is manually lifted and lowered to the top and bottom stops. To close the door simply pull the bottom rail down and allow the door to close under controlled descent. The weight of the curtain will be balanced when the door is half way and biased to go up when raised above half way and biased to close when over half way down. At no point will the curtain weight exceed that of the manual handling regulations.



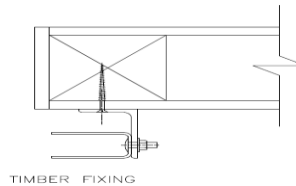
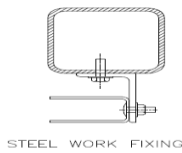
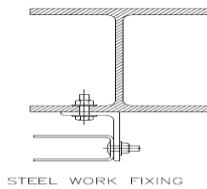
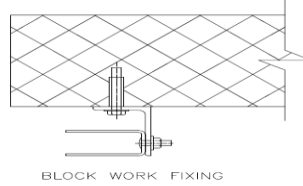
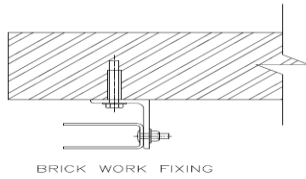
Locking

The bottom rail of the door is fitted with a viro lock which when closed locates into each guide by means of turning a key. Alternatively or in addition to, bullet locks can be fitted to both guides that push through holes in the curtain, again these are fitted and removed by means of a key.



Guides

Constructed from 3mm x 63mm steel wind guide channel bolted to 75mm x 50mm steel angle. For large exposed doors, either deeper guide channels are used or wind locked guides complete with fitting steel wind locks to the curtain in addition to the end locks.

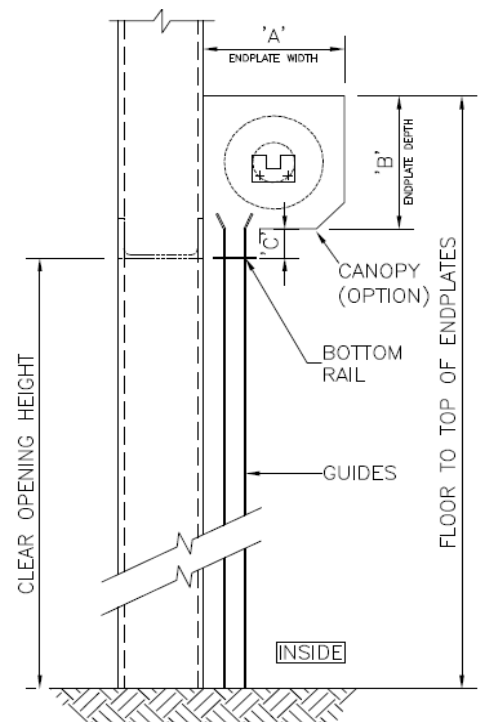
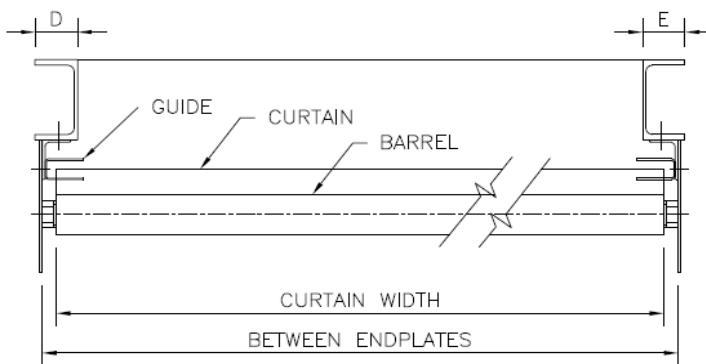
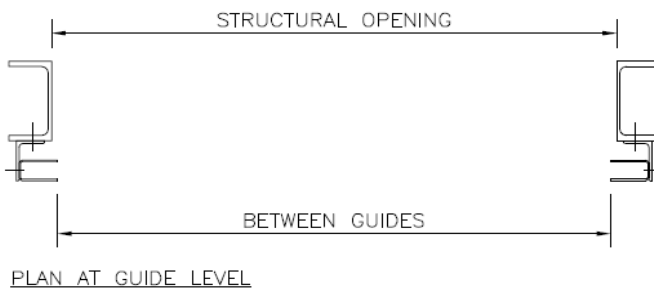


Standard Finish

Galvanised
One coat of primer paint, on non-galvanised faces.

Optional Extras

- Platisol Coated Lath
- Perforated Lath
- Punched Lath
- Powder Coated
- Wicket gate
- Canopies, Fascia
- Bottom Draught Strips.
- Side Brush Seals
- Ground Locks
- Letter boxes



Warranty

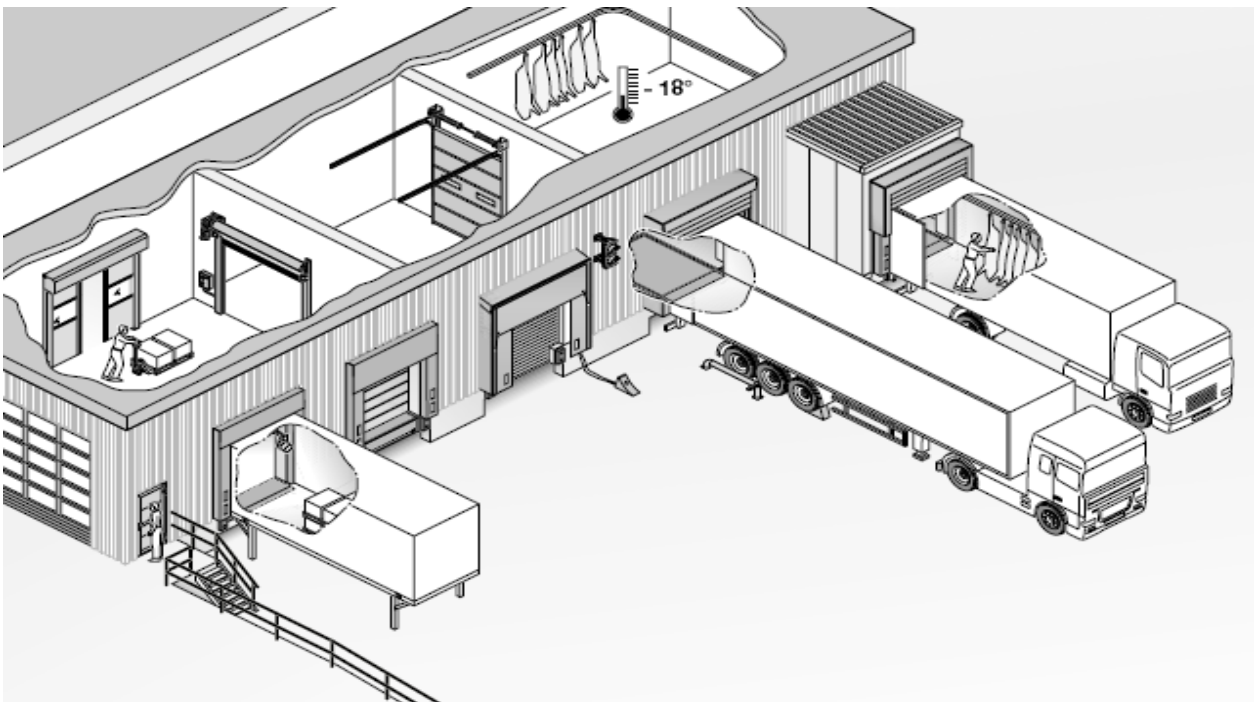
The Delta Roll 2000 doors are supplied with a 24 month parts and labour warranty as standard providing the equipment is maintained in accordance with the manufacturer's instruction and not modified in any way whatsoever. Full details of the servicing requirements are available.

Servicing

To help protect your investment and extend the effective working life of the equipment, full maintenance packages are available and, in most cases, we can maintain all of your existing doors and loading bay equipment. The door must be serviced at least once per annum.

Full details of our preventative maintenance packages are available on request. Enerco recommend the first service is carried out 6 months after installation.

We have Worksafe Contractor, CHAS and Construction Line accreditation as well as being active members of the Doors and Hardware Federation (DHF) where we have their seal of approval for the service and maintenance of doors. We ensure that our staff are trained to the highest standard and all have an NVQ qualification in line with current industry guidelines This NVQ is in addition to the CSCS Health and Safety, First Aid, Asbestos Awareness and other training including product training applicable to our industry and is continually being updated.



Other products in the Delta range from Enerco include: -

Delta Guard – Commercial Shutters	Delta Roll – Steel Roller Shutter Doors
Delta Check – Fire Roller Shutter	Delta Secure – High Speed Security Doors
Delta Slide – Insulated Overhead Doors	Delta Insudoor – Insulated Roller Shutters
Delta Part – Bi – Parting & Sliding Doors	Delta Strip – Strip Curtains
Delta Steel – Steel Security Door Sets	Delta Fold – Steel Sliding Folding Shutters
Delta Bar – Fixed & Removable Window Bars	Delta Lift – Scissor Lifts
Delta Seal – Dock Sealing Systems	Delta Shield – Perimeter Security
Delta Speed – High Speed Doors	Delta Grille – Retractable Window Grilles
Delta Service – Service and Repairs	Delta Load – Loading Bay Accessories
Delta Glide – Garage Doors	Delta Crash – Rubber, Polyurethane & PVC Swing Doors
Delta Glaze – Aluminium Glazed Door Systems	

Please contact our sales team for more information on 01525 289322 or a brochure. Alternatively visit our web site www.enerco.co.uk or www.enercohightspeeddoors.co.uk

We reserve the right to change the specification or alter the product data sheet without prior notification.