

Delta Roll 1000 Security Roller Shutter Door

Product Data Sheet 1/1

Product Description

The Delta Roll 1000 tube operated roller shutter is designed for applications where security is of paramount importance. The door is electrically driven via a motor mounted within the barrel of the door which limits the daily usage to a maximum of 10 – 15 cycles per day.

If more frequent usage is required then our other Delta Roll products can be used. The Delta Roll 1000 door is ideally suited to shop front applications, office building security, etc where the door will only be used at the start and end of the day. Obviously usage during the day is not a problem as long as this is limited.

The compact design with internal in board motor, counterbalance spring and safety bearing ensure the door is adaptable to most environments whether fitted inside or outside.



Curtain

Constructed from 75mm wide curved section in 22SWG, 20SWG or 18SWG (over 22 Sqm), interlocking galvanised (EN10142 bright spangle) steel lath finished with a T or L section bottom rail.

Each lath is locked together to prevent lateral movement using a nylon or pressed steel end locks.

The curtain can be supplied in solid, perforated or a punched format. The punching can be supplied in either an inline or brick bond type format. In addition to the above tube and link curtains are available.

The above types of curtain can be supplied in either standard galvanised, powder coated or plastisol.

Barrel

Constructed from ERW steel tube mounted on a steel stub shaft with integral bearing in one end and the motor fitted at the opposite end. Each end is located into cups fitted to the end plates. Barrels can incorporate helical torsion springs to counterbalance the weight of the curtain. Subject to a risk assessment the non drive end can be fitted with an inertia safety anti fall brake which will arrest the curtain in the event of the motor failing.

Electrical Operation

The drive is by means of a single phase tube motor complete with integral limits and emergency winding handle facility. The size of the motor is calculated by the weight of the door and the number of operations. The door is controlled as standard from either a rocker switch, key switch or radio control. A 240 volt single phase 13 amp supply is required

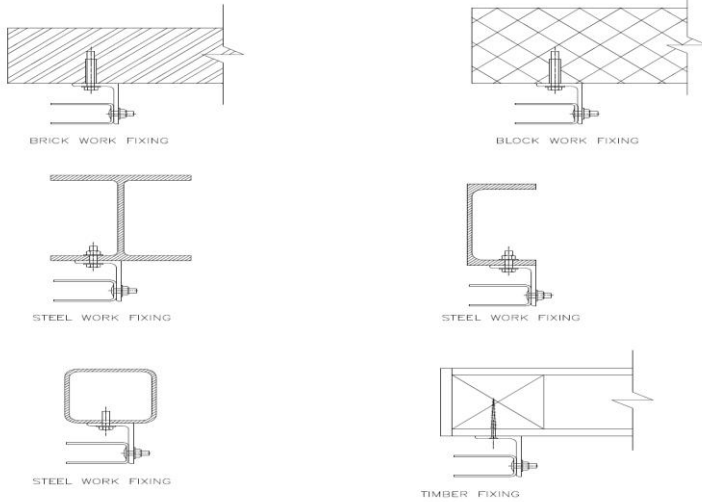
Operation

Normally shutters are operated dead man via the rocker or key switch. When radio controls are fitted push to run open operation is available. Push to run close operation can only be fitted if additional safety features are added i.e. electric safety edge or a photo cell.



Guides

Constructed from 3mm x 63mm steel wind guide channel bolted to 75mm x 50mm steel angle. For large exposed doors, either deeper guide channels are used in conjunction with wind locked guides complete with fitting steel wind locks to the curtain in addition to the end locks.



Standard Finish

Galvanised

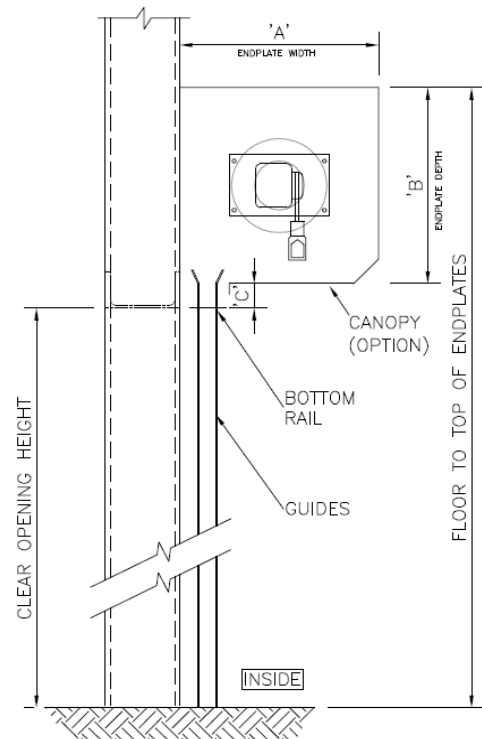
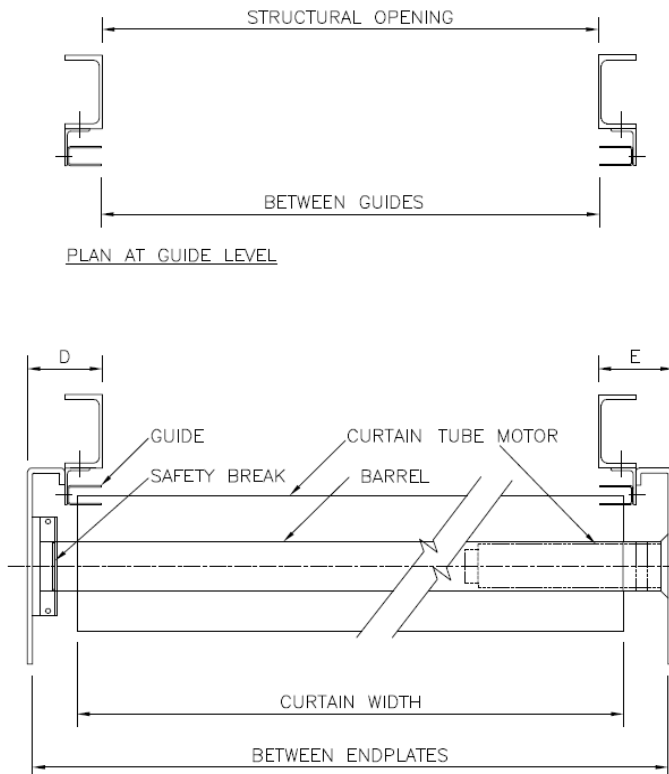
One coat of primer paint, on non-galvanised faces.

Optional Extras

- Plastisol Coated Lath
- Perforated Lath
- Punched Lath
- Powder Coated
- Wicket gate for manual or electrical operated shutters.
- Canopies, Fascia and Motor Covers.
- Bottom Draught Strips.
- Side Brush Seals

Electrical Optional Extras

- Group Controllers
- Key Switch
- Remote Controls



Warranty

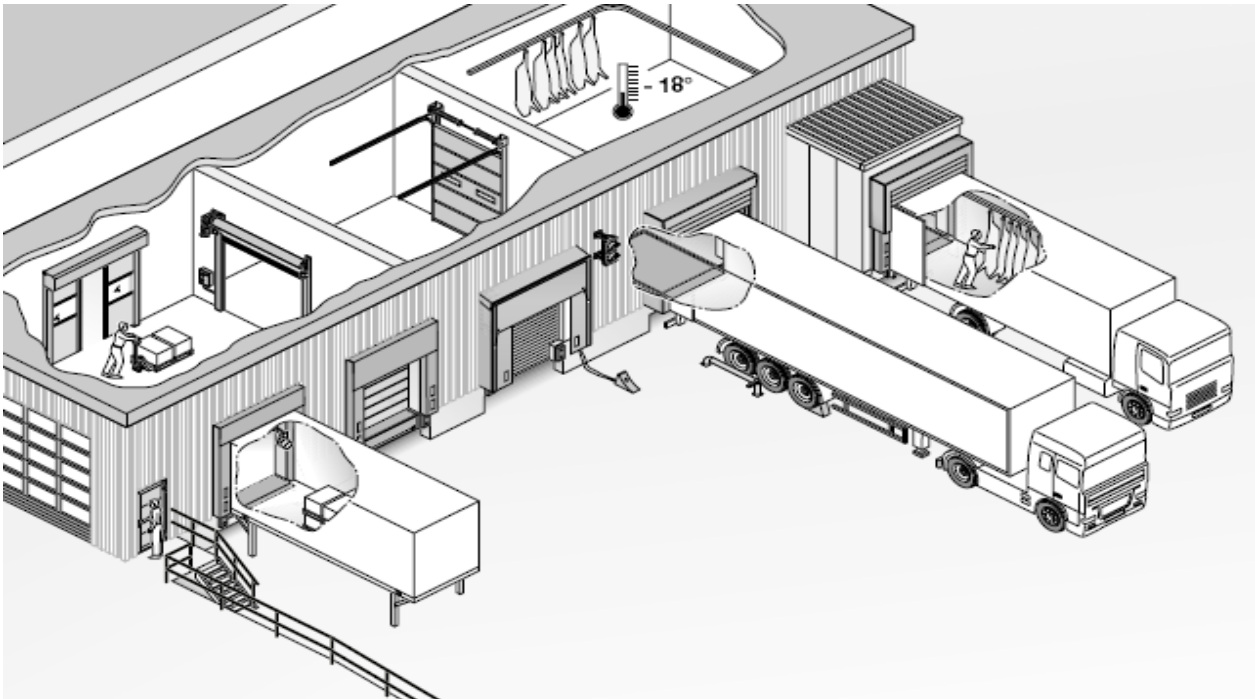
The Delta Roll 1000 doors are supplied with a 24 month parts and labour warranty as standard providing the equipment is maintained in accordance with the manufacturer's instruction and not modified in any way whatsoever. Full details of the servicing requirements are available.

Servicing

To help protect your investment and extend the effective working life of the equipment, full maintenance packages are available and, in most cases, we can maintain all of your existing doors and loading bay equipment. The door must be serviced at least once per annum.

Full details of our preventative maintenance packages are available on request. Enerco recommend the first service is carried out 6 months after installation.

We have Worksafe Contractor, CHAS and Construction Line accreditation as well as being active members of the Doors and Hardware Federation (DHF) where we have their seal of approval for the service and maintenance of doors. We ensure that our staff are trained to the highest standard and all have an NVQ qualification in line with current industry guidelines This NVQ is in addition to the CSCS Health and Safety, First Aid, Asbestos Awareness and other training including product training applicable to our industry and is continually being updated.



Other products in the Delta range from Enerco include: -

- | | |
|---|--|
| Delta Guard – Commercial Shutters | Delta Roll – Steel Roller Shutter Doors |
| Delta Check – Fire Roller Shutter | Delta Secure – High Speed Security Doors |
| Delta Slide – Insulated Overhead Doors | Delta Insudoor – Insulated Roller Shutters |
| Delta Part – Bi – Parting & Sliding Doors | Delta Strip – Strip Curtains |
| Delta Steel – Steel Security Door Sets | Delta Fold – Steel Sliding Folding Shutters |
| Delta Bar – Fixed & Removable Window Bars | Delta Lift – Scissor Lifts |
| Delta Seal – Dock Sealing Systems | Delta Shield – Perimeter Security |
| Delta Speed – High Speed Doors | Delta Grille – Retractable Window Grilles |
| Delta Service – Service and Repairs | Delta Load – Loading Bay Accessories |
| Delta Glide – Garage Doors | Delta Crash – Rubber, Polyurethane & PVC Swing Doors |
| Delta Glaze – Aluminium Glazed Door Systems | |

Please contact our sales team for more information on 01525 289322 or a brochure. Alternatively visit our web site www.enerco.co.uk or www.enercohighspeeddoors.co.uk

We reserve the right to change the specification or alter the product data sheet without prior notification.