

Delta Speed 3530 Internal High Speed Bi-Parting Door

Product Data Sheet
3 / 13

Product Description

The Delta Speed 3530 door is one of our range of very fast acting doors, offering proven individual system solutions for almost any technical requirements up to 3.5m wide x 3.5m high. All Enerco high-speed doors are manufactured in modular design and are almost maintenance free. This results in outstanding operational reliability, fast and inexpensive repairs when damage occurs, as well as low operating costs. Bi-parting doors are, in reality, the equivalent of 8 times faster than conventional vertically rising doors due to the fact that each leaf of the curtain moves from the centre outwards and generally the physical size of a forklift is twice as high than it is wide. High-speed doors protect from drafts, keep temperature zones at a constant temperature and insulate against noise. In addition to this, because of the full height opening, the "out of sight, out of mind scenario" is eliminated.

The door can be fitted with complete all round safety controls i.e. photocells at low level housed on the door columns and fail safe opto-electric safety edge.



Product Advantages

1. Emergency opening using the emergency hand pull or automatically by an open circuit brake control (optional).
2. Very fast opening (3.0m/s) and closing (1.0m/s) with safety.
3. Will operate normally in wind pressures of over 25km/h.
4. Full height opening and increased safety
5. Frequency converter controls ensure smooth fast operation with minimum wear.
6. Opening widths can be different for personnel and vehicles thus saving energy.

Applications

- To minimise energy losses by automatically opening and closing, quickly and safely.
- Minimise draughts and maintain constant temperatures
- As a partition between factory areas.
- In busy traffic doorways.
- Improves the working environment.
- Enhances aesthetic appearance.



Door Design

The curtain is manufactured from polyester reinforced, colour impregnated PVC. The curtain is opened and closed from the rollers in each column by means of the aluminium leading edges. The leading edges are suspended from the carriages that traverse in the top lintel section.

The side columns, manufactured from galvanised steel, are opened easily for maintenance. The standard version does not include a motor cover. Stainless steel doors are available on request that meet the standards of hygiene demanded by the foodstuffs, chemicals and pharmaceuticals industry.



Door Drive Mechanism and Control Panel

The door is powered both open and closed by a 415v 3PH/N/E geared brake motor.

Controls consist of an integrated control panel that controls all of the door functions including the failsafe diagnostics required for the photocell and safety edge. Further benefits include as standard interlock capability, induction loop cross traffic detection and many others. The control panel is equipped with up and stop push buttons.



Safety Features

- Photocell protection (standard)
- Electric safety edge (optional).
- Emergency opening lever

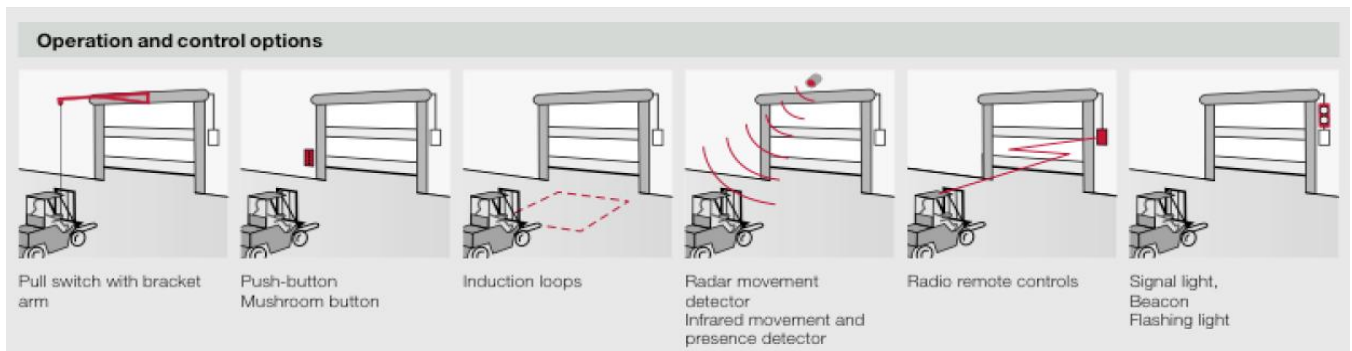
All safety features are self-diagnostic and fail-safe.

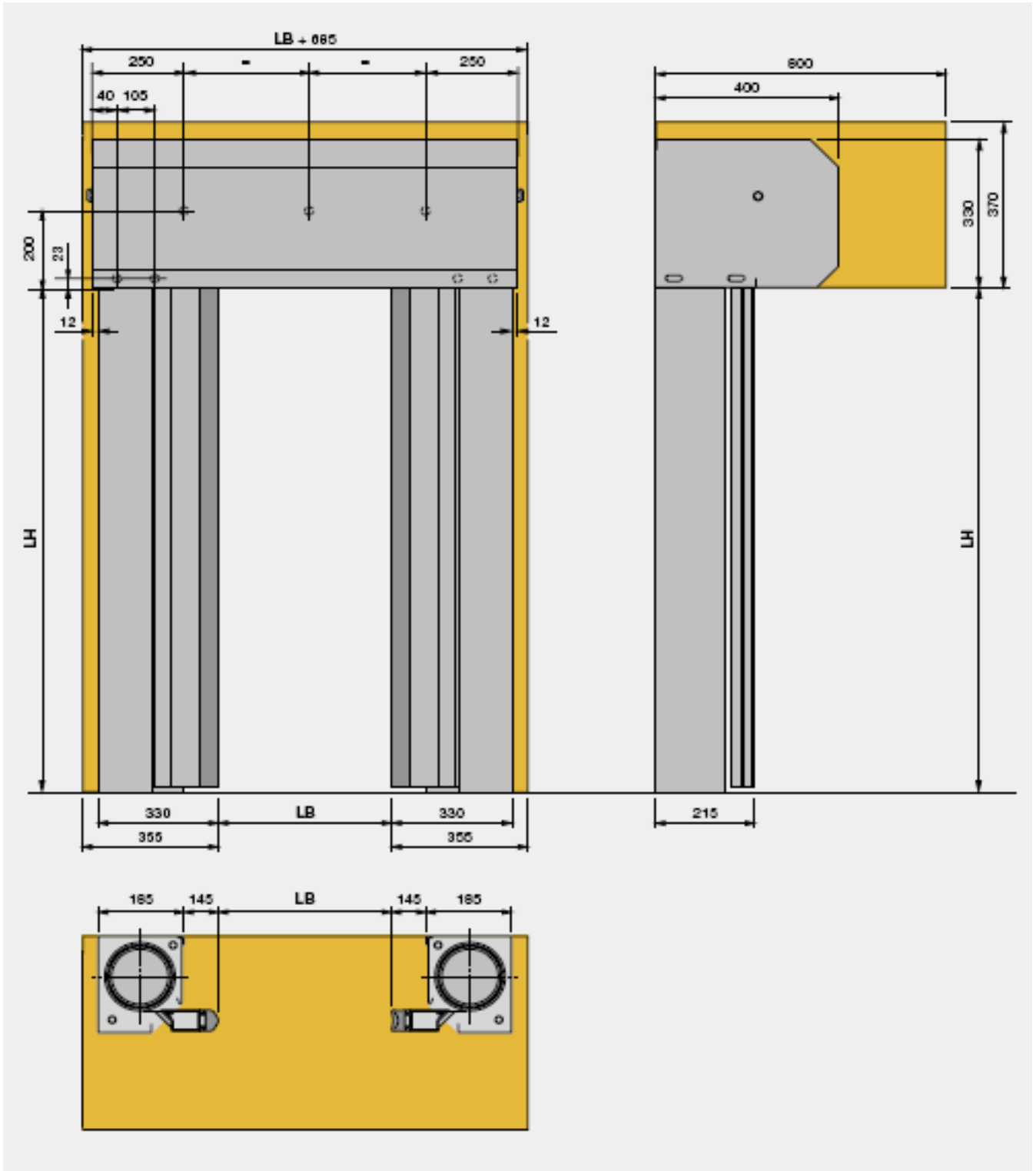
Remote Controls

The door can be supplied with additional remote controls. These fall into two categories, activation and safety. When wired to activate, they will open the door from its closed position, stop the door from closing when open and stop / reverse the door when closing.

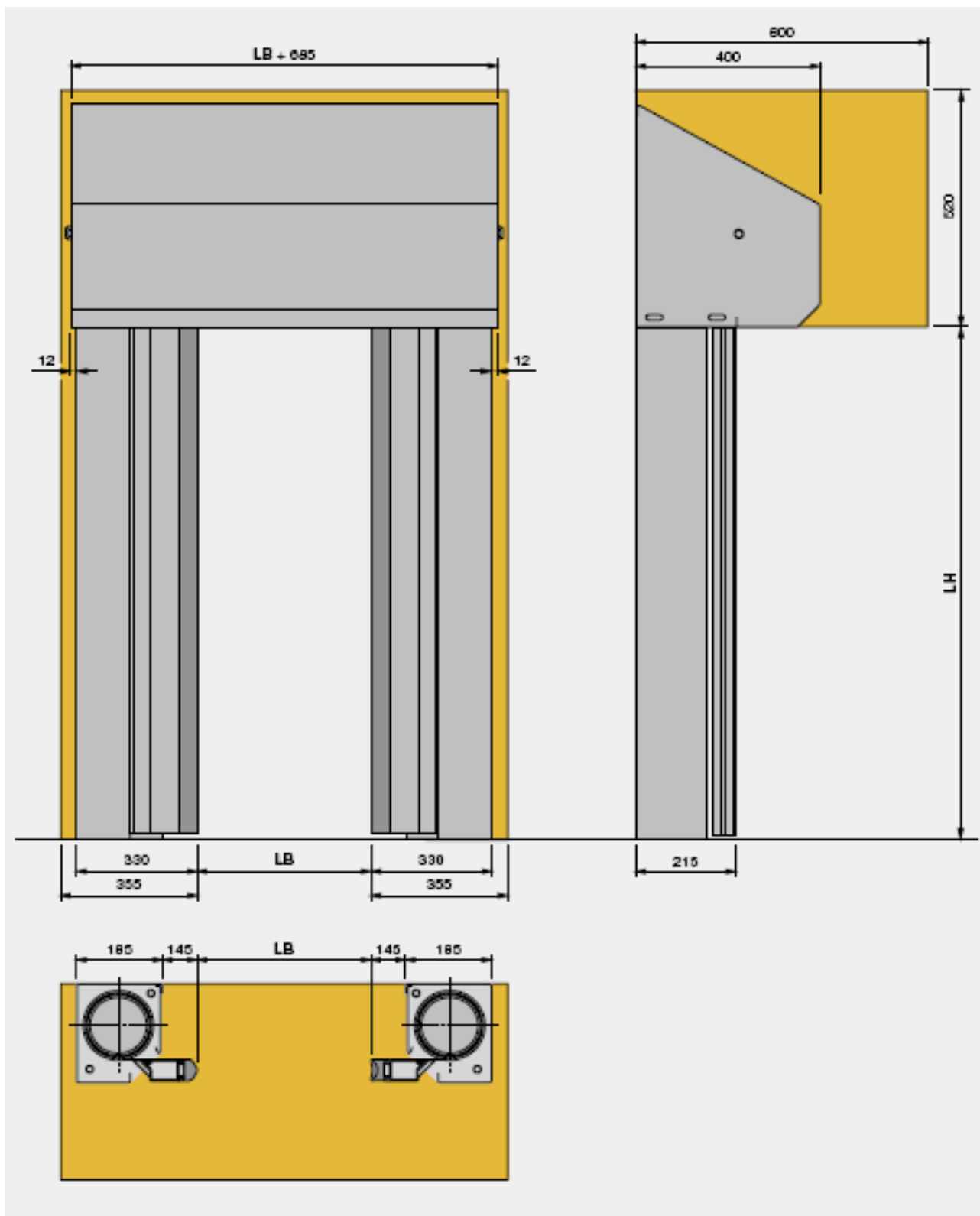
When wired to safety the features are the same as to activate however the door will not open when closed.

Remote controls include induction loops, photocells, radar, push buttons / pull switch operation or radio / infrared controls.





General Arrangement Drawing Showing Standard Straight Cladding



General Arrangement Drawing Showing Angled Cladding

We reserve the right to change specification without prior notification or alteration of this product data sheet.